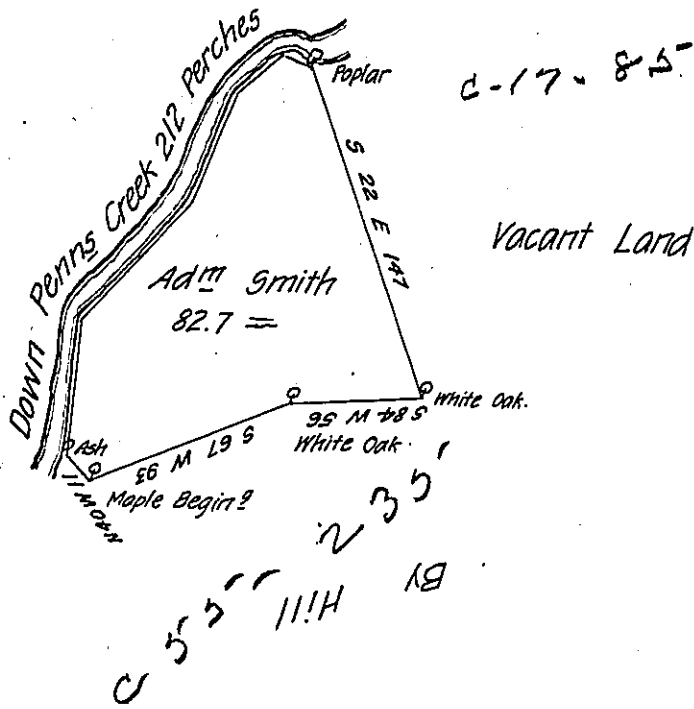


Courses and Distances
down Penns Creek

N 3 E 58
N 40 E 69
N 20 E 50
N 49 E 24
S 74 E 11
212



The Draught of a Tract of Land called _____ situate on the south side of
 Penns Creek in the County of Cumberland containing Eighty two Acres 128 Perches
 with the usual allowance proportionate to Six acres P. Cent for Roads Survey-d
 the 15th day of August Anno Dom: 1769 in pursuance of an Order of Survey to
 Adam Smith bearing date at Philada the 3^d day of April Anno Dom: 1769 and
 numbered 2304

P-

W^m Maclay D.S.

To John Lukens Esq.

S. G. of Pennsylvania

IN TESTIMONY that the above is a copy of the original remaining on file in
 the Department of Internal Affairs of Pennsylvania, made
 conformably to an Act of Assembly approved the 16th day of
 February 1833, I have hereunto set my hand and caused
 the Seal of said Department to be affixed at Harrisburg,
 this thirty first day of December 1906

Isaac R. Brown
 Secretary of Internal Affairs.